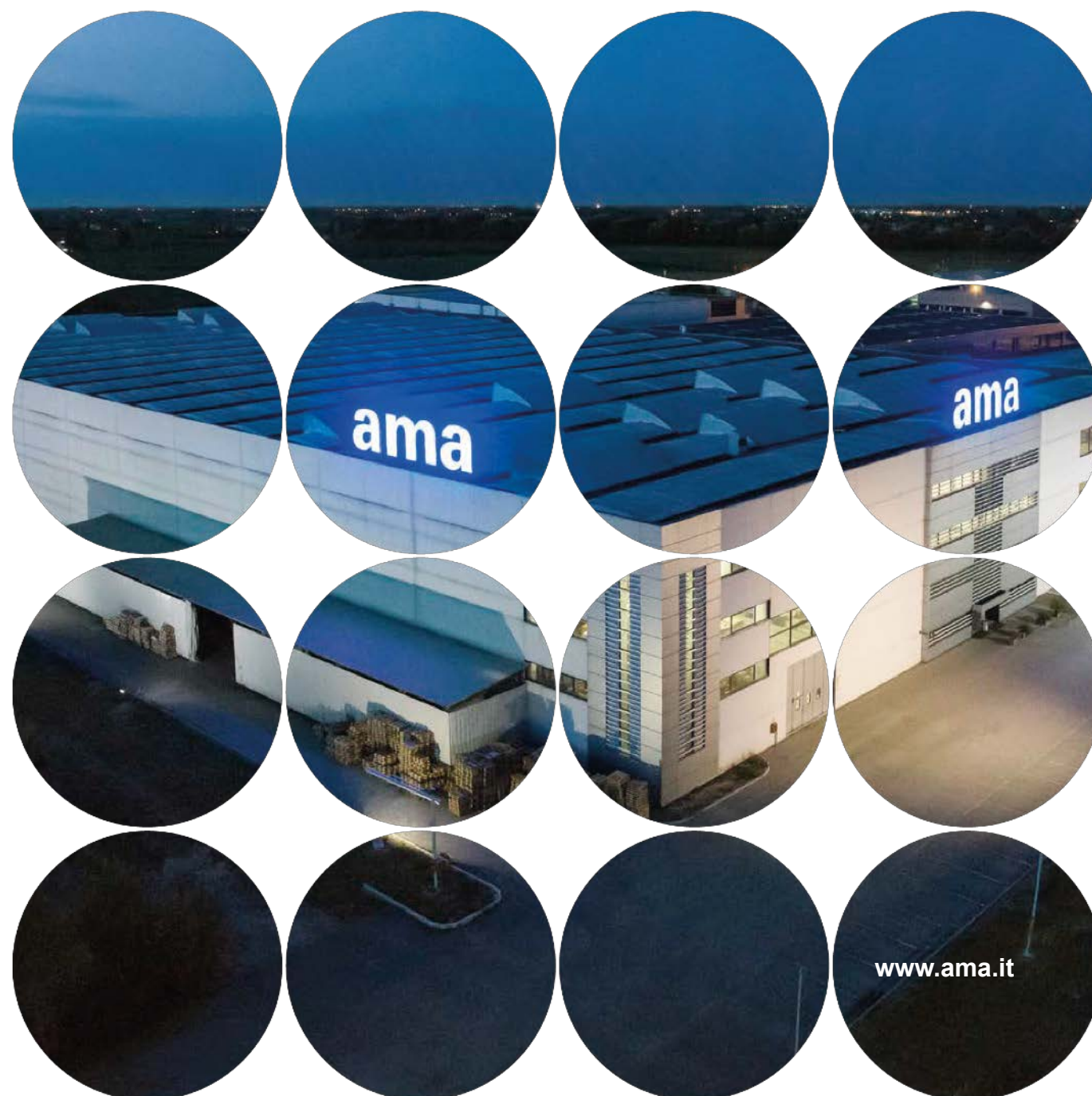


# AMA GROUP

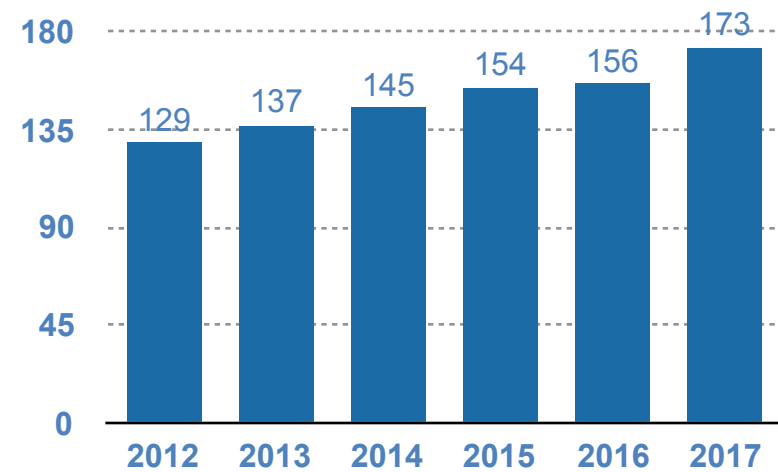
## Company Profile



## Highlights

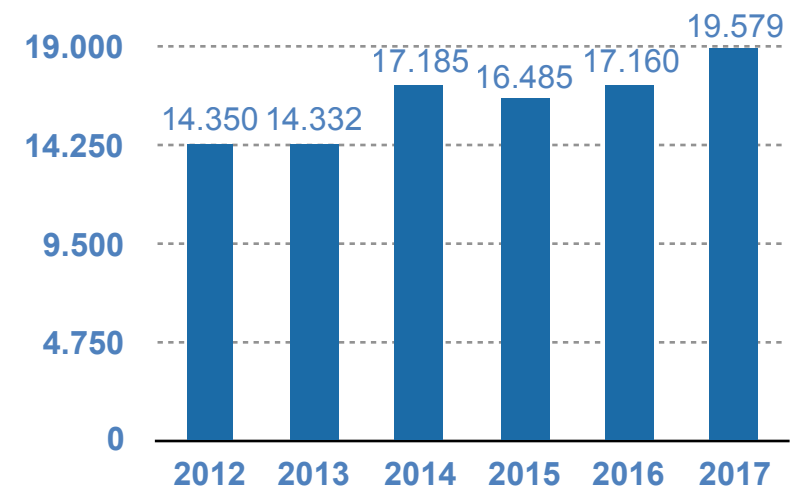
### Sales

(in millions of euro)

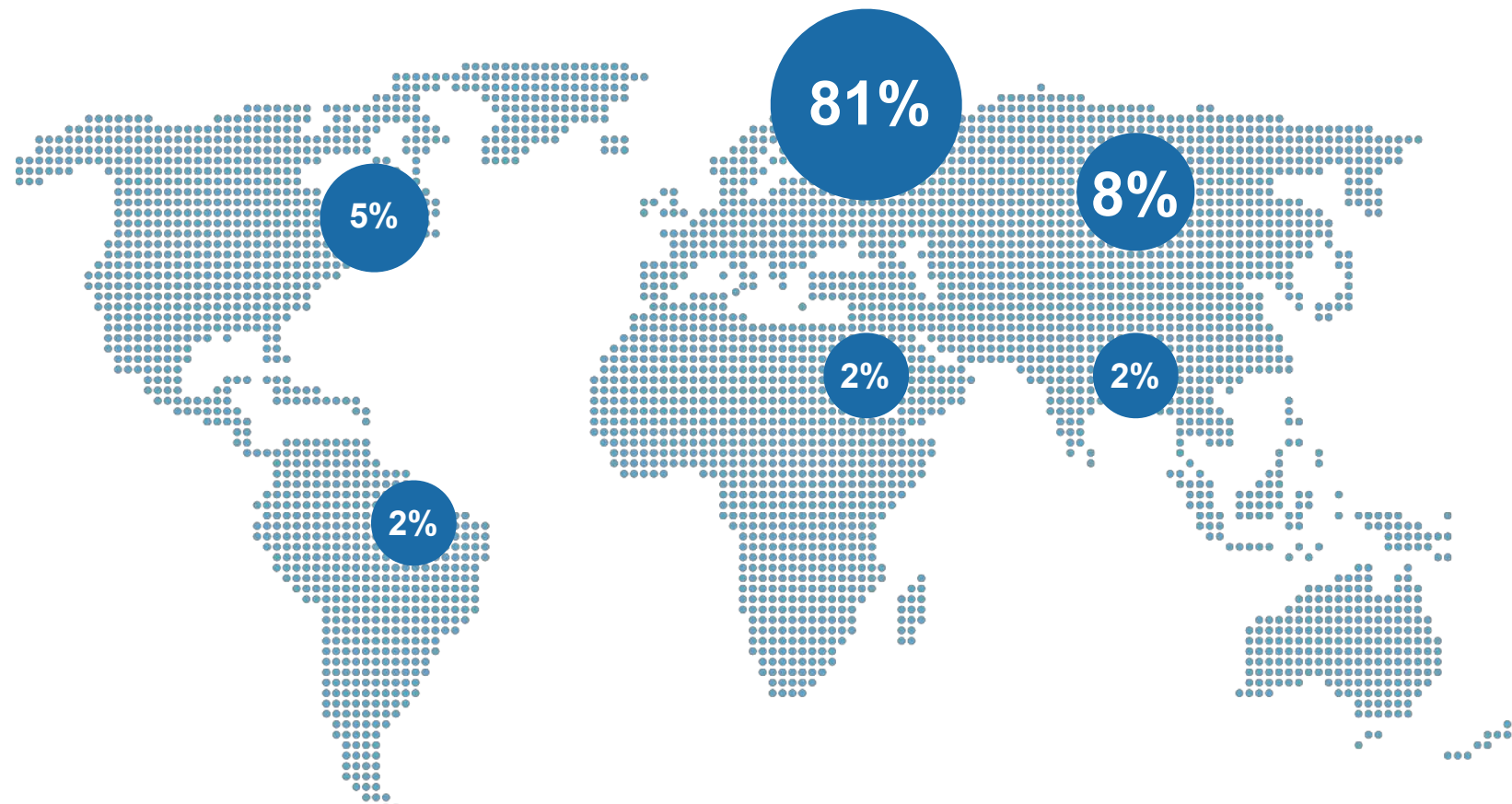


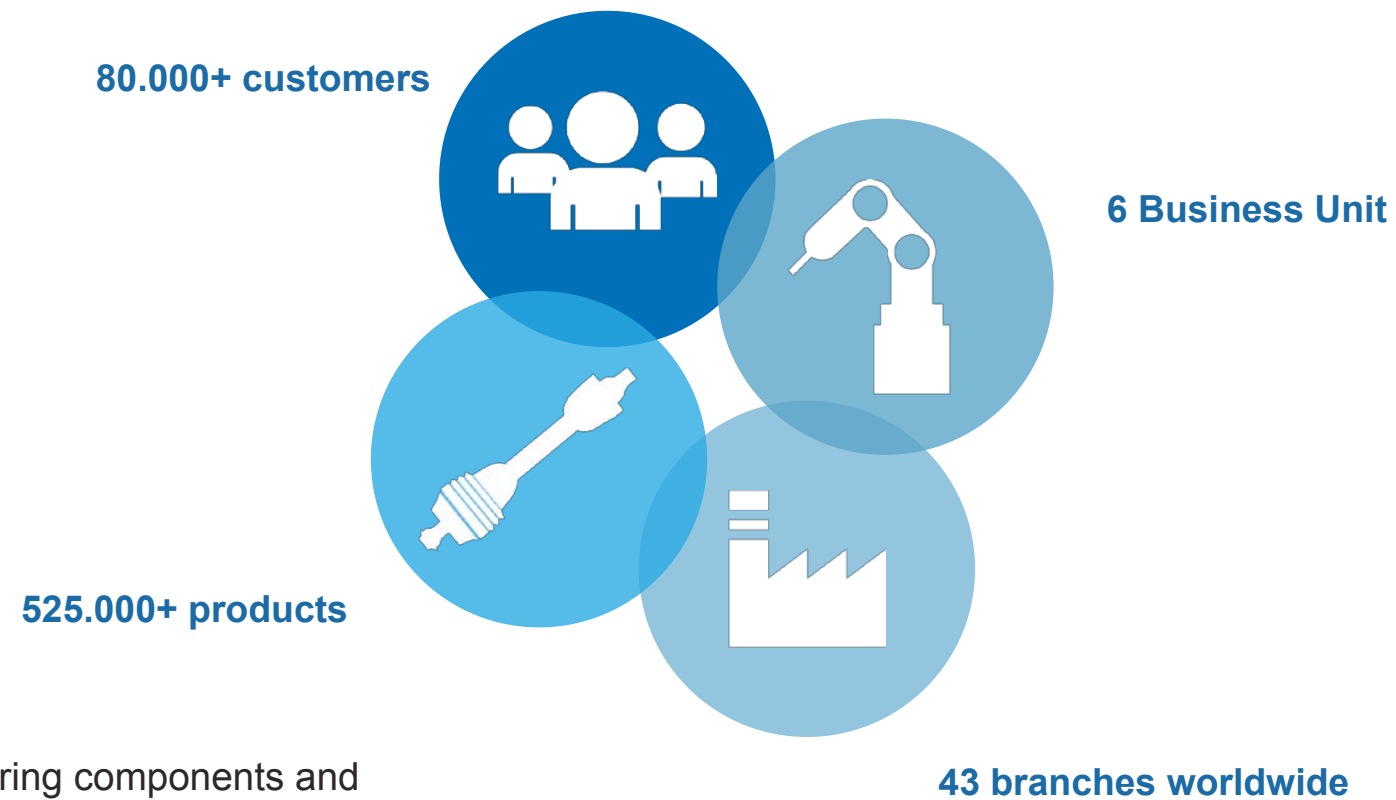
### EBITDA AMA Group

(in thousands of euro)



### Sales by Area 2018

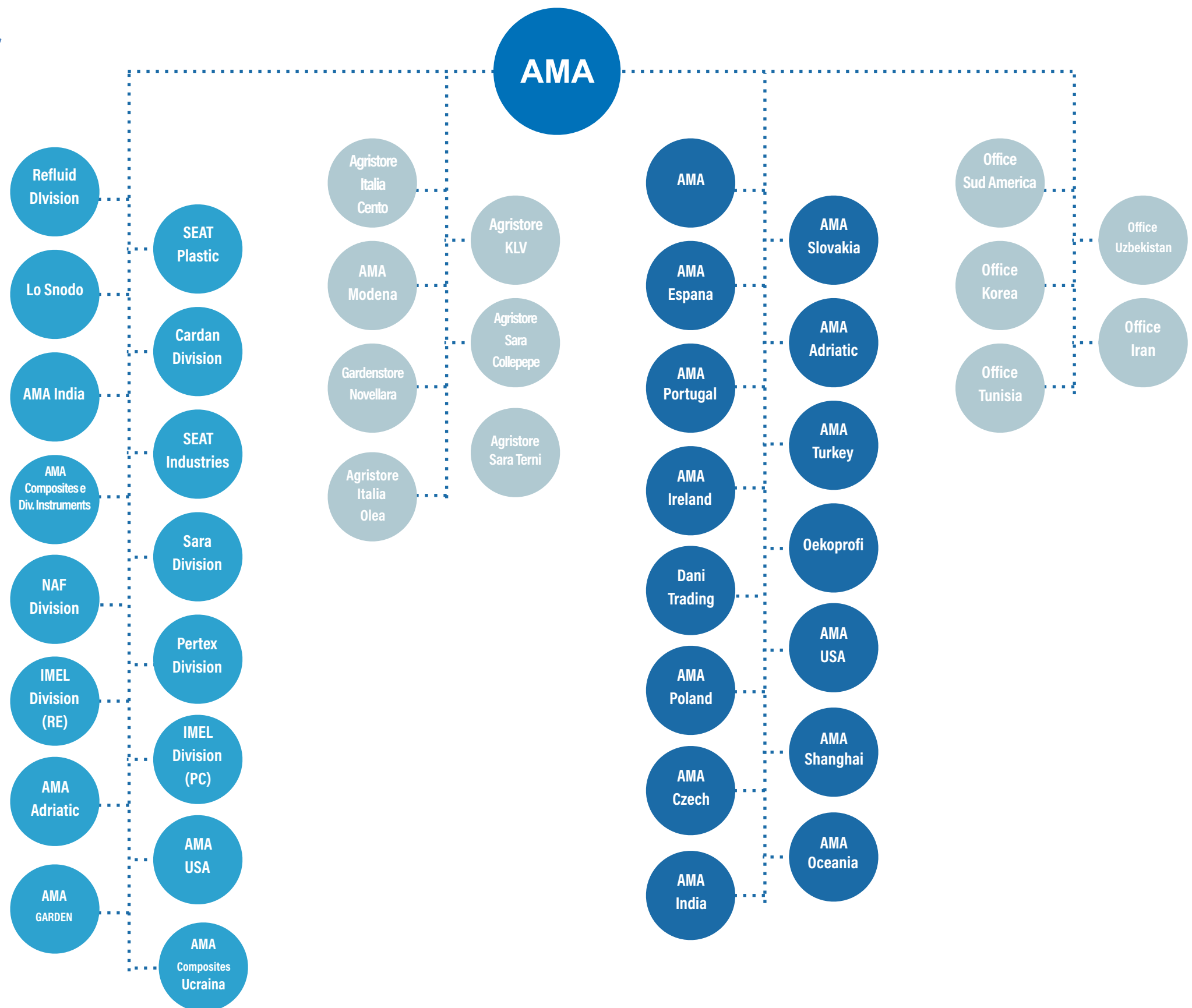




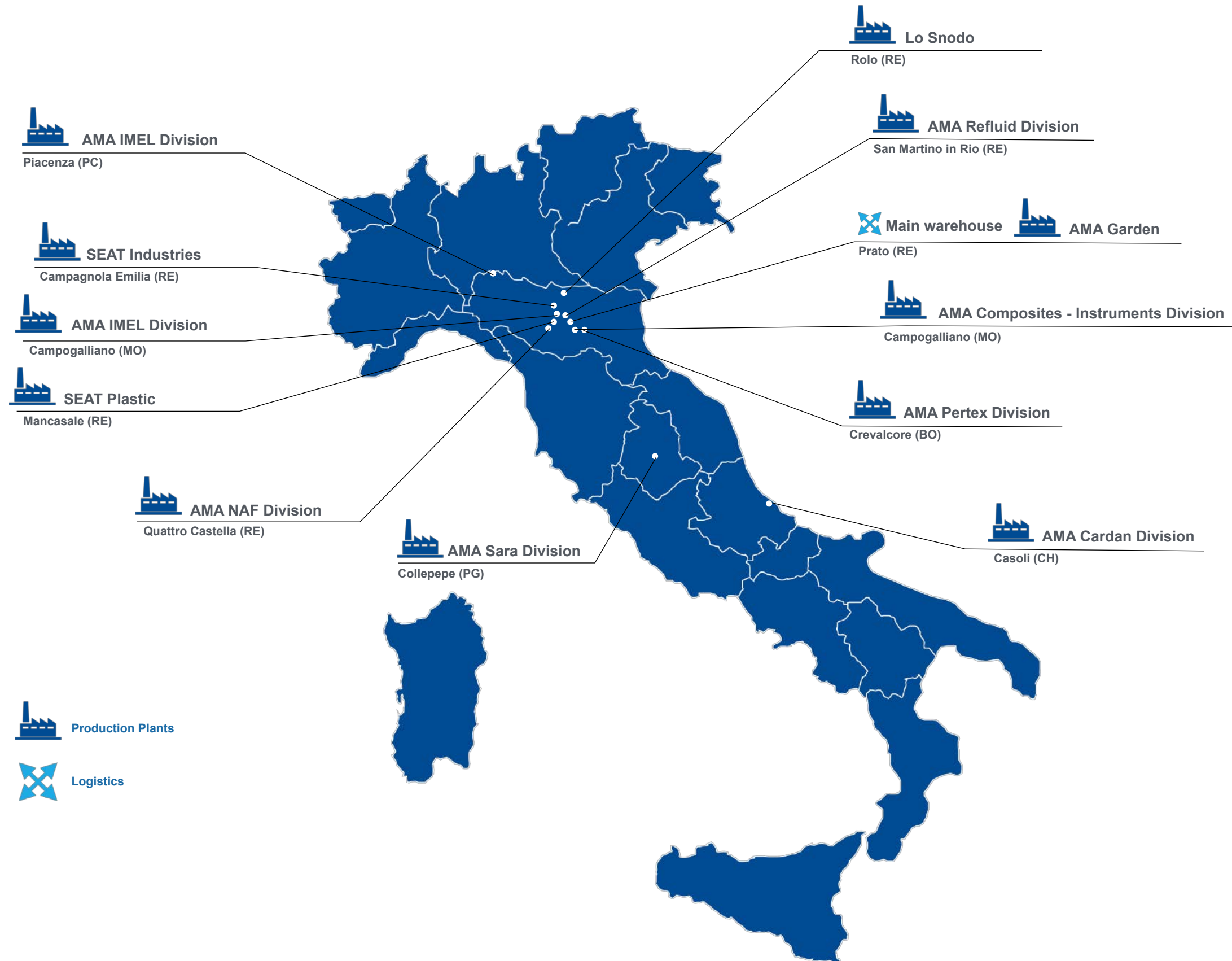
AMA S.p.A. is specialized in manufacturing components and equipment for production and maintenance of agricultural machines, Off Highway Vehicle (OHV) and gardening machines.

- 80.000 customers in 90 countries with an overall turnover of more than 170 million euros
- 525.000 products addressed to the OEM and After Market sectors
- 6 Business units
- 43 branches in 20 countries:
  - 12 production plants,
  - 4 production plants abroad,
  - 15 branches across the world
  - 7 stores
  - 5 commercial offices

(Data: 2018 HR AMA S.p.A. at 30/09/18)



# Italian Production Plants





# Worldwide Production Plants, Branches & Commercial Offices



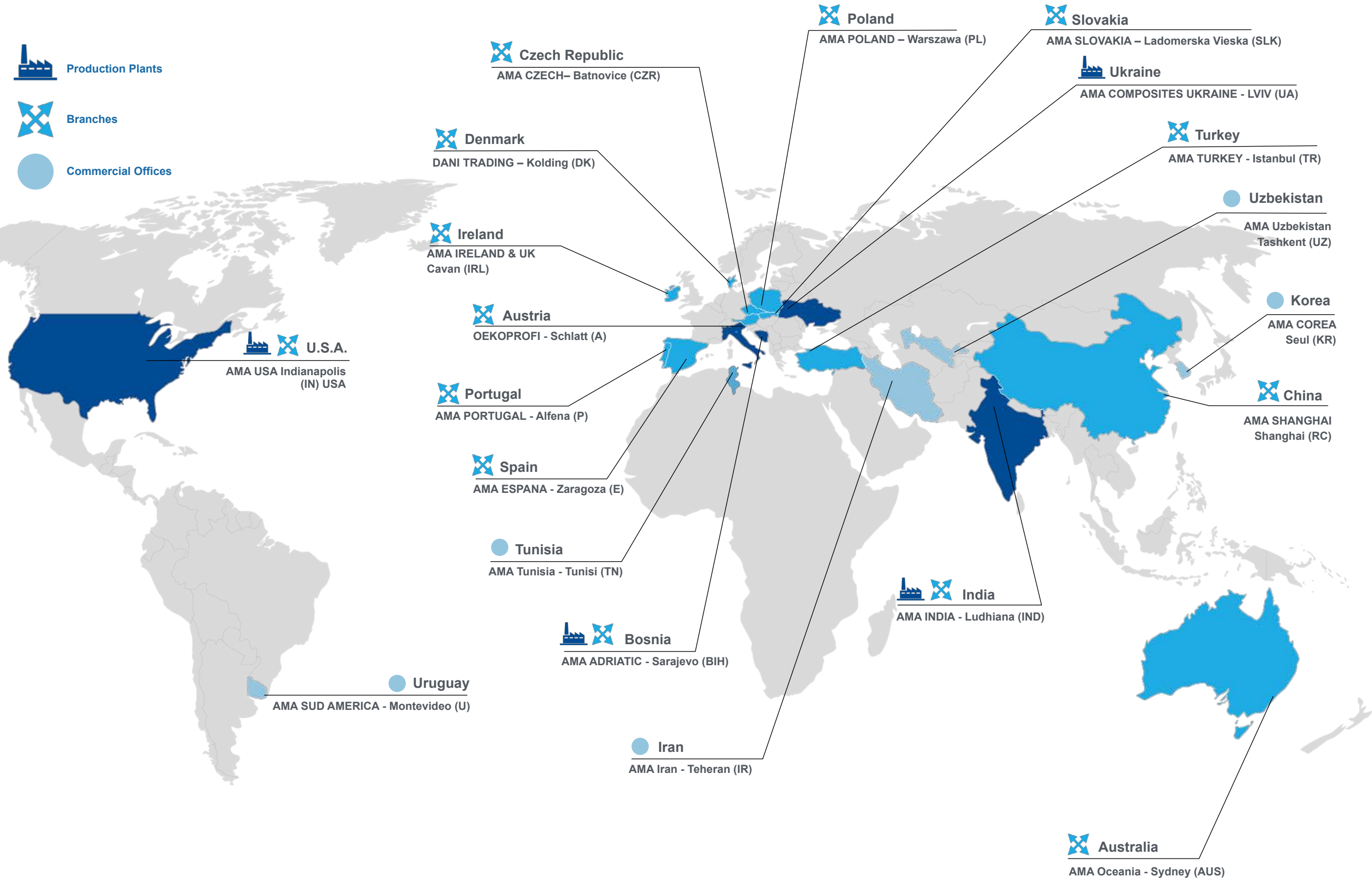
Production Plants



Branches



Commercial Offices

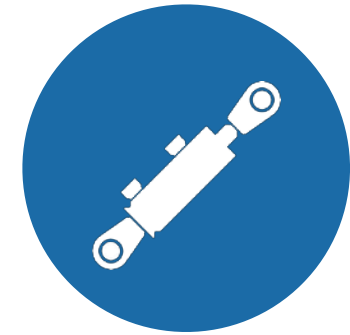




**1- Agri Components BU**  
Total employees: 350



**2 - Soil Equipment BU**  
Total employees: 75



**3 - Hydraulic BU**  
Total employees: 124



**4 - Cabins BU**  
Total employees: 252



**5 – Seat and Steering Wheels BU**  
Total employees: 96



**6 - Garden BU**  
Total employees: 10

# AGRI Components BU

AMA Cardan Division  
Casoli (CH)  
Italy



Production of standard PTO shafts with wide angle joint, with different profiles and a wide range of components.



Seat Plastic  
Mancasale (RE)  
Italy



Injection molding/mould design and manufacturing. Steering wheels for agricultural and industrial machines.





# Agri Components BU

Lo Snodo  
Rolo (RE)  
Italy



Production of 3-point linkages and joints for agricultural and industrial industry, tie rods, customized sleeves and components, to be used where design studies and checks of structural loads are required.



AMA India  
Ludhiana - Punjab  
(INDIA)



Production of top link assembly and metal parts for agricultural machines.



# Soil Equipment BU

AMA NAF Division  
Quattro Castella (RE)  
Italy



Production of hoes, knives for choppers stalks, teeth harrows, disc harrows, blades for mower and cutter blades.



AMA Sara Division  
Collepepe (PG)  
Italy



Production of wear parts, adaptable to plows and equipment for soil working, plowing bodies and spare parts (plow, mouldboards, chisels) standard and customized. Average carpentry, design customized.



# Hydraulic BU

AMA Refluid  
San Martino in Rio (RE)  
Italy



Customized hydraulic cylinders,  
REFLUID components for control  
units and hydraulic systems



AMA Adriatic  
Sarajevo  
(Bosnia - Erzegovina)



Standard and customized  
hydraulic cylinders





# Cabins BU

AMA IMEL Division  
San Martino in Rio (RE)  
Italy



Design and manufacturing of complete steering columns and steering systems, electric and electronic instruments, wiring systems, headlights, taillights, off road lights and signal lights.



AMA Pertex Division  
Crevalcore (BO)  
Italy



Production of steering shafts: fixed, adjustable, tilting, telescopic, with or without gas spring, turn signal and sensor pads.



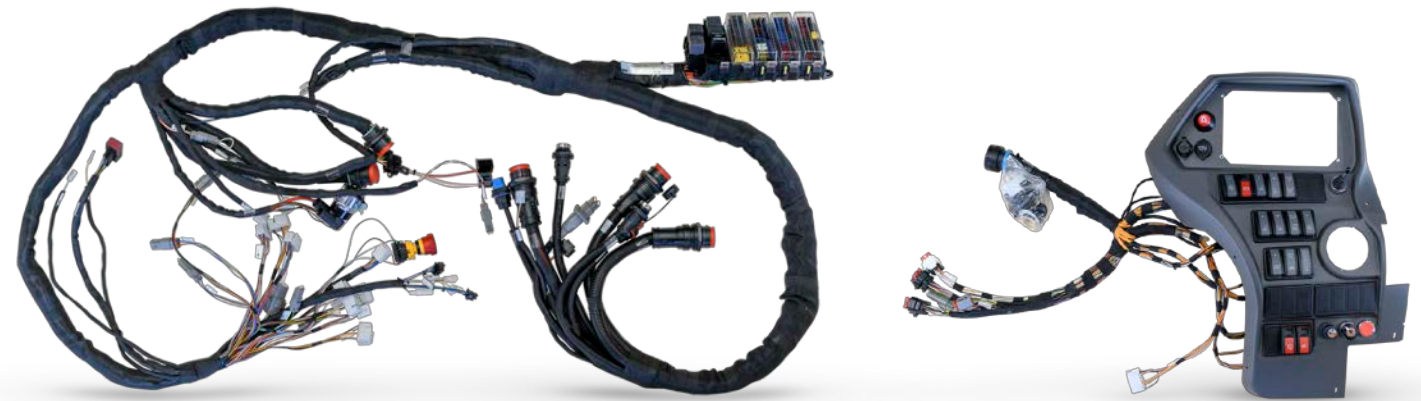


# Cabins BU

AMA IMEL Division  
Piacenza (PC)  
Italy



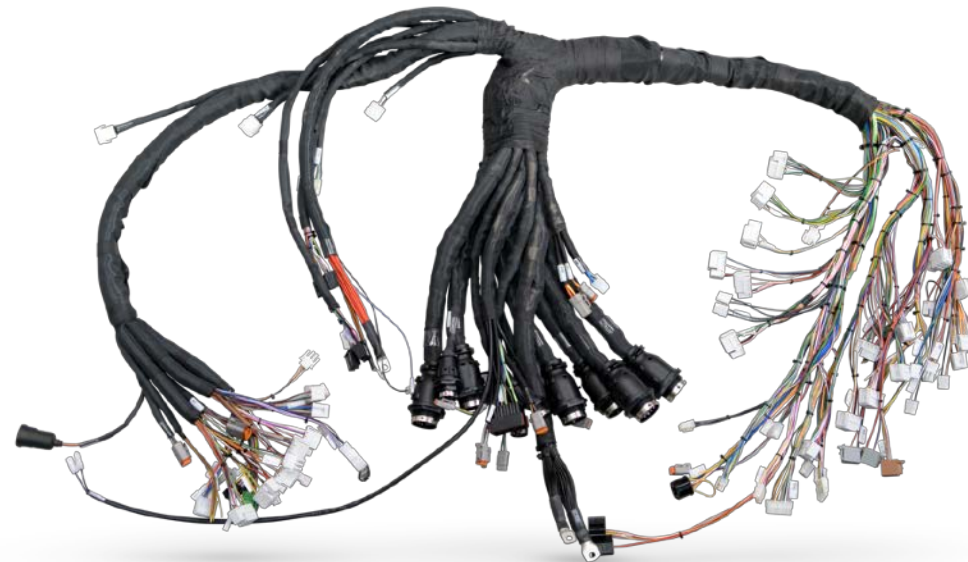
Production of wiring  
harnesses



AMA Adriatic  
Sarajevo  
(Bosnia - Erzegovina)



Production of wiring  
harnesses

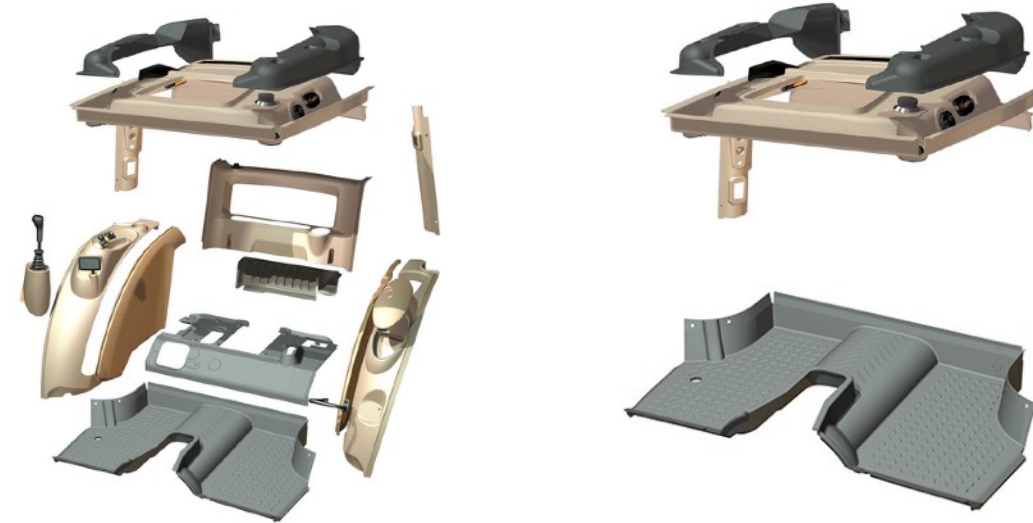


# Cabins BU

AMA Composites  
Campogalliano - (MO)  
Italy



Designing and production of ABS vacuum thermoformed components, components made of “soft touch” material, polyurethane foam and injection molded components.



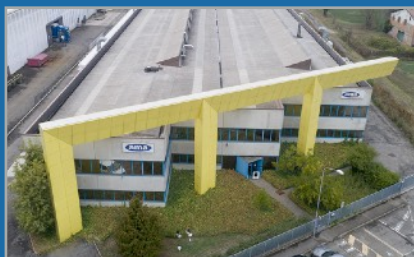
AMA Composites Ukraine  
Lviv  
Ukraine



Design-Engineering-prototyping, mass production and assembly of components in composite materials such as GRP, foamed resin and RTM.



AMA Instruments Division  
Campogalliano (MO)  
Italy



Designing and manufacturing of analog and digital instrumentation, from development of control panel solutions to design and overall customization of the finished product.





# Seat and Steering Wheels BU

Seat Industries SRL  
Campagnola Emilia (RE)  
Italy



Designing & manufacturing static & suspended seats and steering Wheels for agricultural and construction machines, material handling vehicles, lawn mowers & garden tractors. Design and manufacturing of passenger seats for buses.



AMA USA  
Indianapolis  
Indiana (USA)



Production site for seats for OHV and distribution branch. It offers the whole range of Ama standard and customized items throughout North America.



AMA Adriatic  
Sarajevo  
Bosnia - Erzegovina



Manufacturing of low-cost seats for agriculture.



# Garden BU

AMA Garden  
Prato di Correggio (RE)  
Italy



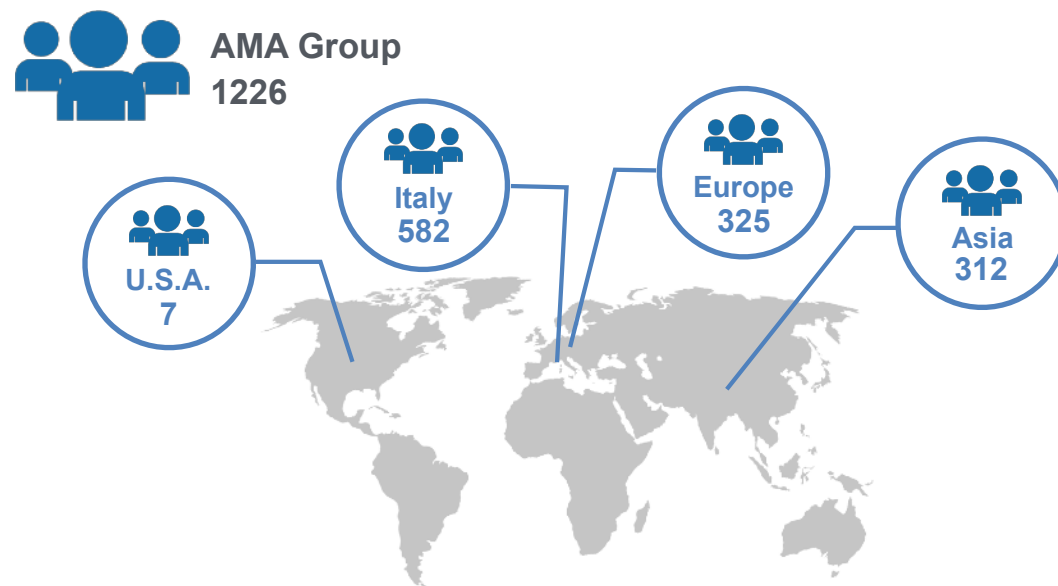
Gardening machines, accessories  
and spare parts.





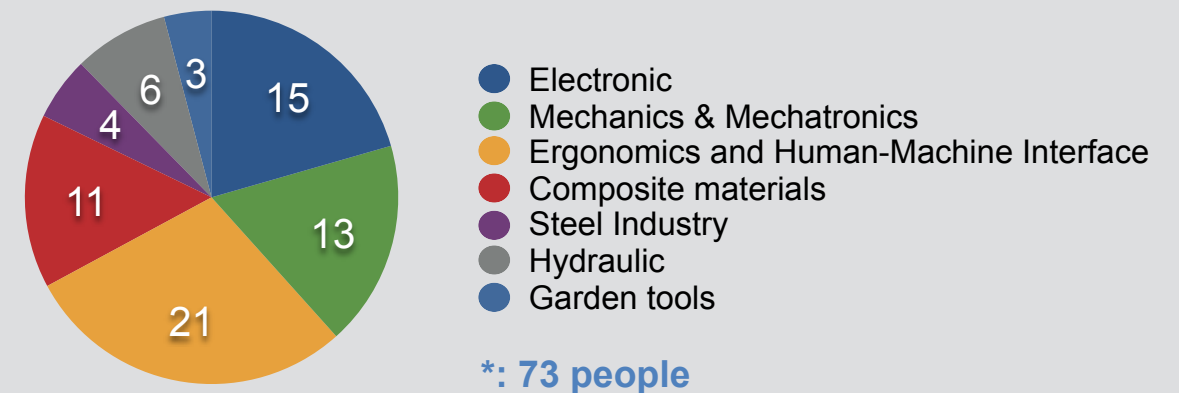
## Employees 2018 (as of 09/30/2018)

(Data: HR AMA S.p.A.)



## R&D Focus

(units)

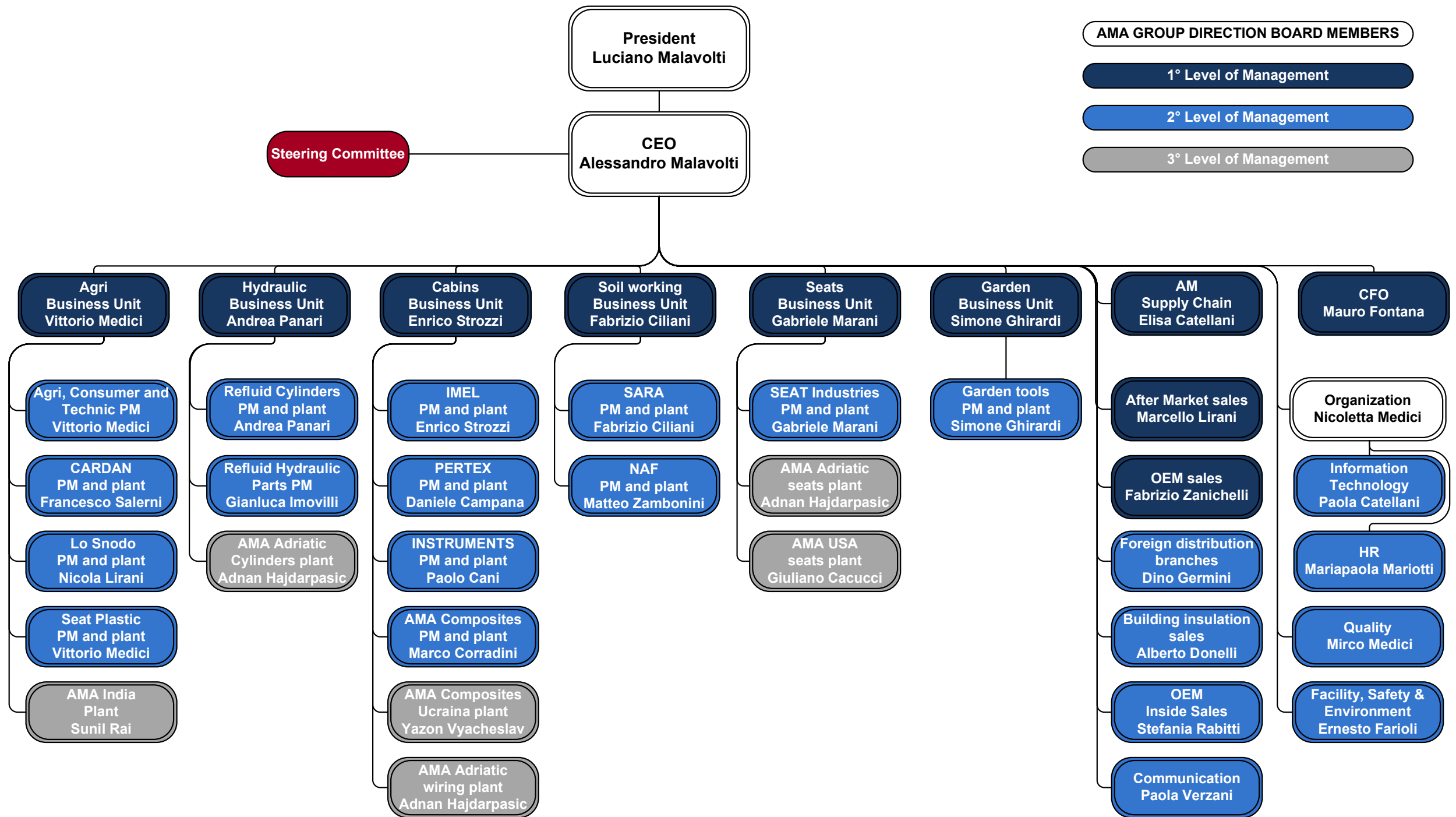


## AMA people per function (management, consultants and temporaries included)

(in n° of units)



# Organization and Steering Committee



## Board of Directors

**President:** Luciano Malavolti

**CEO:** Alessandro Malavolti

**Directors:** Isabella Malavolti, Nicoletta Medici, Ernesto Farioli

## Board of Statutory Auditors

**President:** Giuliano Canovi

**Statutory Auditors:** Alberto Grilli

Giuseppe Cavalchi

## Supervisory Agency - Legislative Decree NO. 231

**Giuliano Canovi (President)**

**Giuseppe Maffei**

**Paolo Alessandro Indricchio**

## Steering Committee

**President:** Luciano Malavolti (Founder)

**CEO:** Alessandro Malavolti (since 1994 in Ama)

**Function Supervisor:** Nicoletta Medici (since 1995 in Ama)

**OEM Sales Manager:** Fabrizio Zanichelli (since 1991 in Ama)

**AM Sales Manager:** Marcello Lirani (since 1998 in Ama)

**Business Unit Manager Agriculture:** Vittorio Medici (since 1990 in Ama)

**Business Unit Manager Soil Working:** Fabrizio Ciliani (since 1989 in Ama)

**Business Unit Manager Cabs/Elettric:** Enrico Strozzi (since 1987 in Ama)

**Business Unit Manager Seat:** Gabriele Marani (since 1991 in Ama)

**Business Unit Manager Hydraulic:** Andrea Panari (since 2002 in Ama)

**Business Unit Manager Garden:** Simone Ghirardi (since 1998 in Ama)

**Finance and Control Direction Supervisor:** Mauro Fontana (since 1981 in Ama)

**Supply Chain Manager:** Elisa Catellani (since 2018 in Ama)

## Auditing Company

**AUDIREVI SpA**

## Main References







AMA S.p.A.



AMA S.p.A.

Via Puccini, 28

42018 - San Martino in Rio (RE)

Italy



0522 6369



info@ama.it



www.ama.it



Facebook - AMA